

# Livingetc

june 2021

guest editor jonathan adler  
serves up

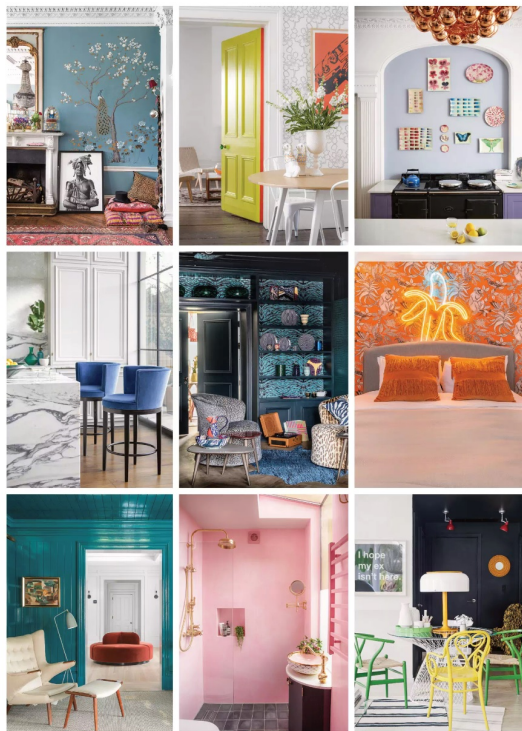
## happiness through design

euphoric  
interiors

PATTERN, PLINTHS  
& PLAYFULNESS ALL  
ADD PERSONALITY  
THE STYLE SETTERS  
KICK-STARTING  
A BRAND-NEW ERA  
CELEBRATE THE JOY  
OF ECCENTRICITY

dress your  
home for the  
roaring  
twenties 2.0

Ideas to give your space that extra oomph



DESIGN DOSSIER

DESIGN DOSSIER: PERSONALITY

## personality

Buys and tips for joyfully designed homes

### EXPERT VIEW Playing with scale

Robert Stiller, designer

“Scale is everything – it’s critical to a scheme. If you don’t get the scale right the design will look ridiculous.

**To play with scale** you should consider repetition, consistency and balance. You can play with scale in plan, elevation and in situ. You can visualise and tangibly move around materials and objects to create variations. I start by playing in plan and elevation, and then going to the site and sensing it personally with my eye. I rely on visceral feelings so I can create opinions on scale.

**Lighting is a great way to experiment with scale** because it adds drama. It incorporates sculptural elements and can occupy space in interesting ways. It’s important to evaluate how the lighting or a statement piece relates to the room as a whole.

**With artwork I like to be bold.** I think that people tend to be shy about scale and tend to err on making things too small, but go bigger with everything – art, furniture, objects.

**Small spaces do not mean small objects.** Larger objects can make a small space feel bigger.

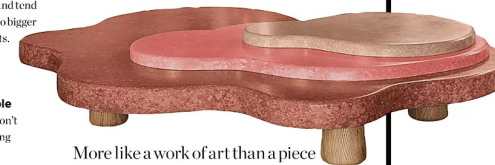
**The biggest mistake is that people are conservative and go small.** Don’t be afraid to make things bigger and bring them into your space.

**That said, depending on the conditions and the space,** there is certainly a moment where less is more and smaller is better. Or you can create a conversation between a space that features larger-scale items with a space that exhibits some smaller-scale pieces.

FEATURE THEA BABINGTON-STITT



**SAUCY SIGN**  
Go tongue in cheek with your bedroom decor. This bold neon piece is the perfect addition to a home that doesn’t take itself too seriously. **The Real Banana LED neon sign, £219, Yellowpop**



More like a work of art than a piece of furniture, this dreamily fluid and handcast table is sure to add a welcome touch of whimsy. **The Lagoon table, from £24,570, Korner Interiors at The Invisible Collection**

news