

Fabric Selection

Faina

Category A - Ascendant



020



021



022



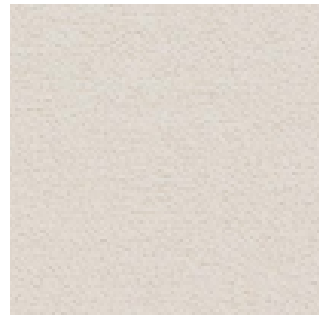
050



091



060



070



093



Fabric Selection

Faina
Category B - Renard



71



65



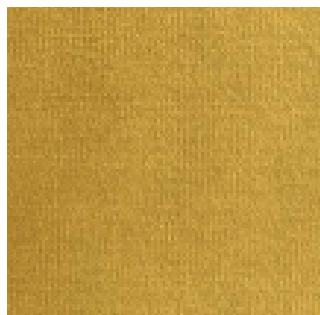
54



98



19



15



01

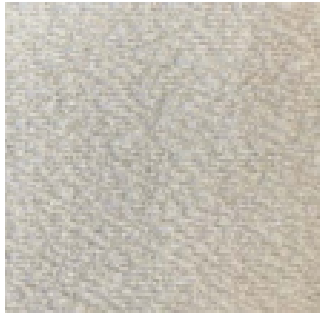


80



Fabric Selection

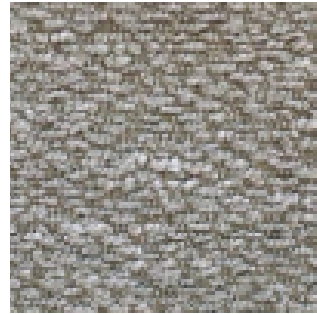
Faina
Category B - Bouganville



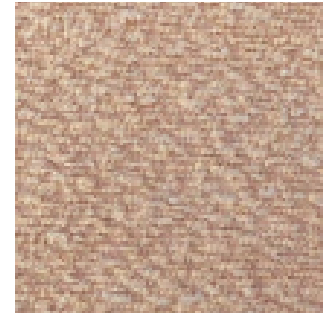
1



3



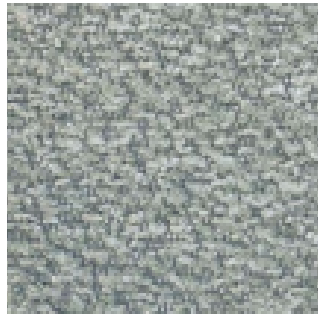
4



5



7



8



20



21

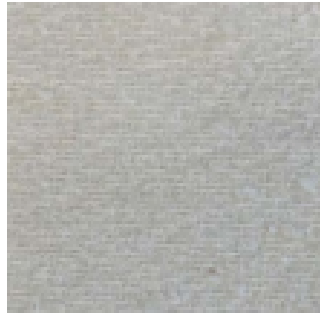


Fabric Selection

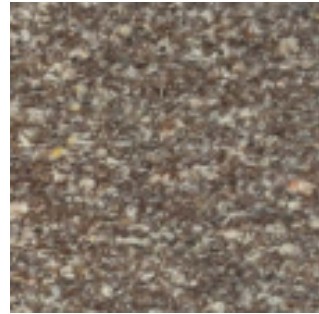
Faina
Category B - Feijoca



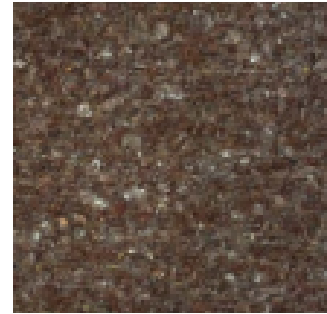
2



1



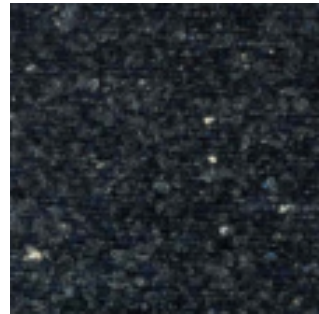
3



5



20

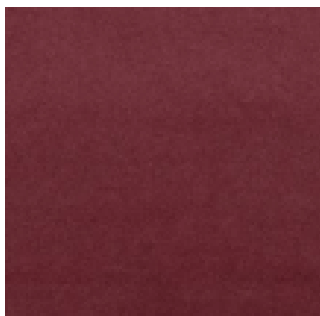


21

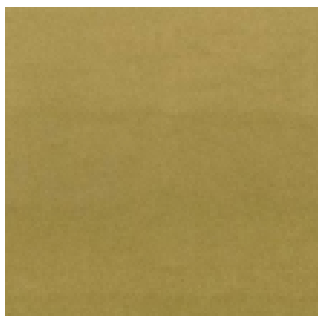


Fabric Selection

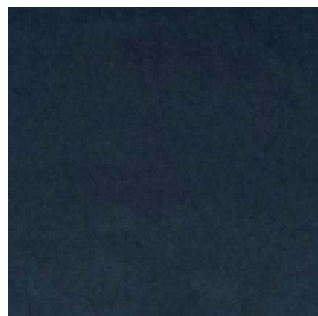
Faina
Category H - Forres



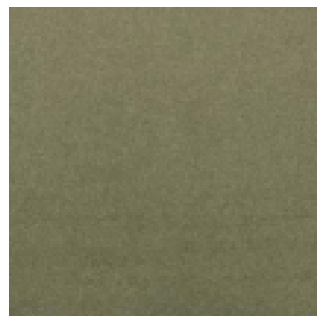
1



7



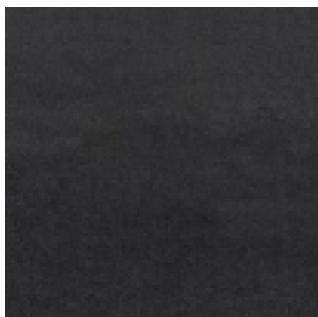
15



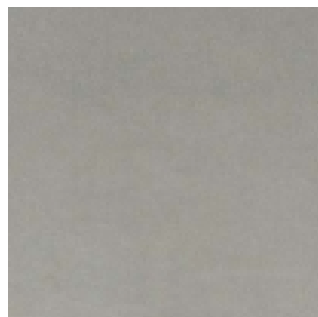
8



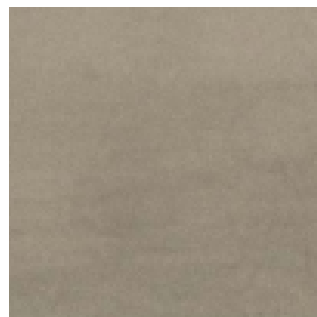
17



20



22



26



Fabric Selection

Faina

Category C - Lucrezia



02



03



05



31



19



26



42



34

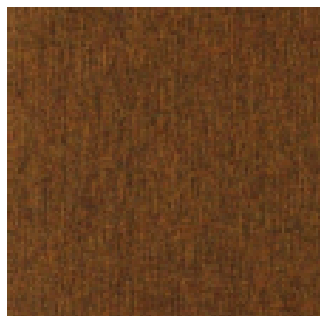


Fabric Selection

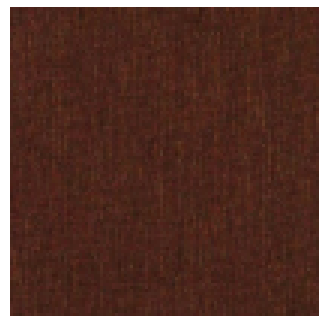
Faina
Category C - Lucrezia



800



501



300



700



302



402



401



400

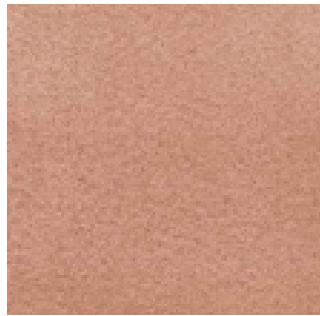


Fabric Selection

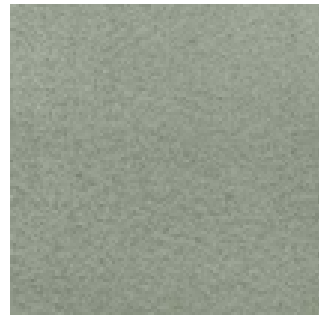
Faina
Category B - Samos



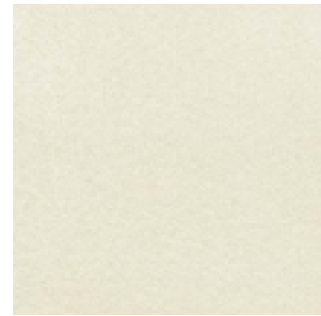
01



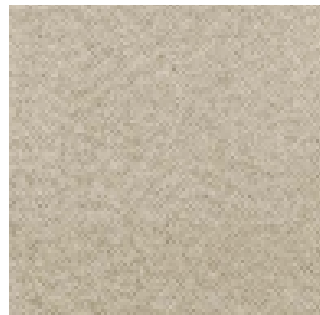
02



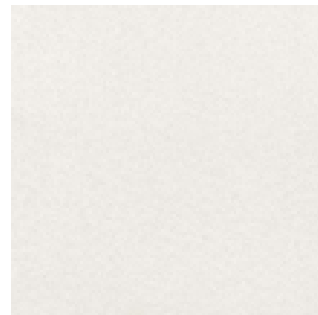
03



06



16



07



Fabric Selection

Faina
Category B - Petunia



3



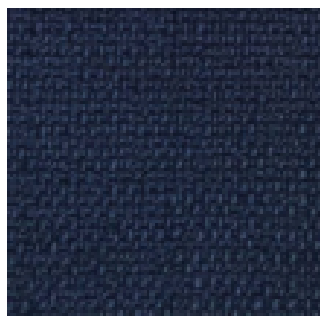
2



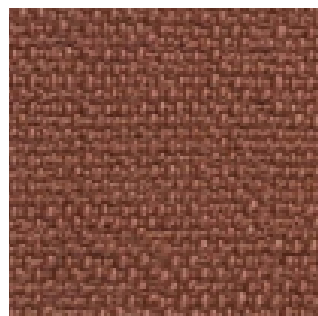
5



4



6



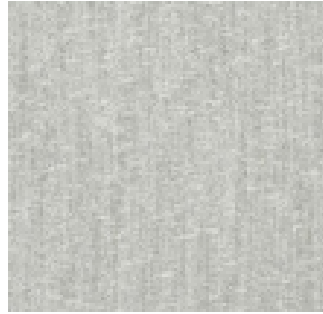
9



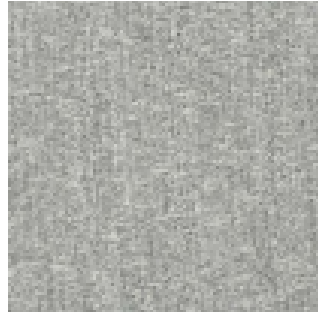
Fabric Selection

Faina

Category A - Reykjavik



091



092



070

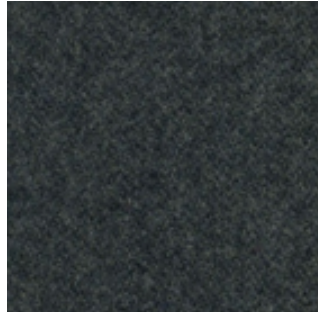


Fabric Selection

Faina
Category D - Wool



42



47



33



34

