

# Fabric Selection

House Of Today - Atelier L'Inconnu

Dedar, Nimbus



Brebis



Nuvola



Loden



Nude



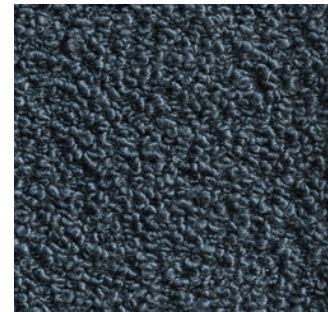
Testa Di Moro



Topo



Tortora



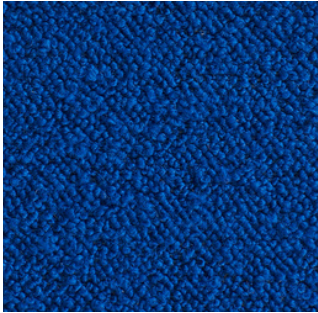
Ardesa



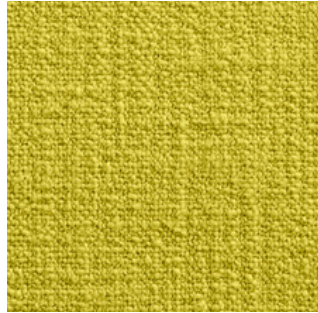
# Fabric Selection

House Of Today - Atelier L'Inconnu

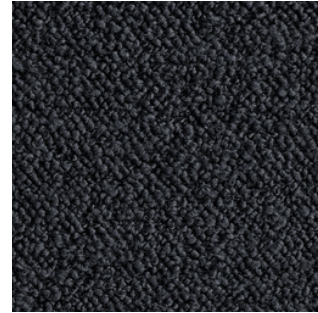
Dedar, Karandash



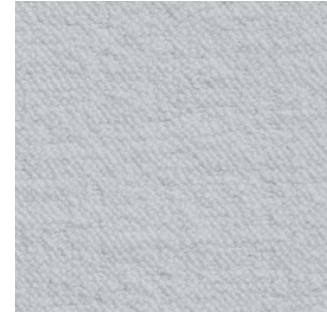
Cobalt



Souffre



Black



Acier



Brebis



# Fabric Selection

House Of Today - Atelier L'Inconnu

Dedar, Adorable Alpaca



Sabbia

