



INVISIBLE  
COLLECTION

# INVISIBLE COLLECTION

## About Invisible Collection

Founded in 2016 by Anna Zaoui, Isabelle Dubern-Malleveys and Lily Froehlicher, Invisible Collection is the leading online market place for discovering beautiful designs from the world's most renowned talents.

The state-of-the-art online platform offers access to a unique and curated inventory of bespoke creations internationally, entirely made by exceptional craftsmen with unparalleled expertise.

Celebrating the icons of tomorrow and the vanguards that paved the way, certified B-Corporation Invisible Collection champions sustainable luxury by promoting craftsmanship and heritage, with a made-to-order model.

Since 2021, Invisible Collection has pledged to offset the carbon emissions of its transport and delivery.

Following its launch, Invisible Collection has since expanded its digital presence with showrooms in London, New York and Paris.



Proud to be Certified B Corporation™

This company meets the highest verified standards of social and environmental performance, transparency, and accountability.

# INVISIBLE COLLECTION

## A Home in the Sky

The Penthouse of our dreams has become a reality: Peek inside the most stunning property above Central Park, featuring Invisible Collection's iconic designs. Designed by Banda Property, the London-based design and development studio founded by Edoardo Mapelli Mozzi, this stunning abode above the clouds is a feat of subdued opulence and modern chic.

The interiors reflect a delicate, yet dynamic juxtaposition of subtlety and statement, of city and nature, of ultra-contemporary and touches of vintage. The carefully curated furniture pieces and custom rugs from our star designers are seamlessly paired to conjure an atmosphere of subtle grandeur. Specially made by the best artisans, these elegant designs serve as counterpoints to the sleek glass & steel structure, each finding its rightful place in the expansive interiors, channeling one aesthetic idea of French chic.









**Sofa 260 by Pierre Augustin Rose**

Sofa upholstered in Dedar Sinequanon Crema fabric  
Legs in black painted oak  
W 102.26" x D 47.2" x H 29.9" / W 260 x D 120 x H 76 cm  
Handmade in Europe



**Craft Round Table by Pierre Augustin Rose**

Coffee table with varnished sculpted oak top  
Off-white lacquered base  
W 33.5" x D 33.5" x H 15.4" / W 85 x D 85 x H 39 cm  
Handmade in Europe



**Ceramic Rug by Atelier Février**

Hand-knotted rug  
90% wool, 10% pure silk  
Ø 165.3" / Ø 420 cm  
Hand-knotted in Nepal



[theinvisiblecollection.com](http://theinvisiblecollection.com)







**Ebisu Armchair by Charlotte Biltgen**

Armchair upholstered in Pierre Frey Georges fabric in Vieux Rose  
W 37" x D 31.5" x H 26.7" / W 94 x D 80 x H 68 cm  
Handmade in France



**"Two Tone" Daybed by Charlotte Taylor x Garcé & Dimofski**

Daybed with Ebonised Oak structure and legs  
Upholstered in Pierre Frey Basile fabric in Crème  
W 76" x D 33.5" x H 17" / W 94 x D 80 x H 68 cm  
Handmade in Portugal



**Resin Stool by Floris Wubben**

Galerie Jag  
Stool in resin, finished in a coloured layer of epoxy  
Ø 15.75" x H 16.54 / Ø 40 x H 42 cm  
Handmade in Holland



[theinvisiblecollection.com](http://theinvisiblecollection.com)





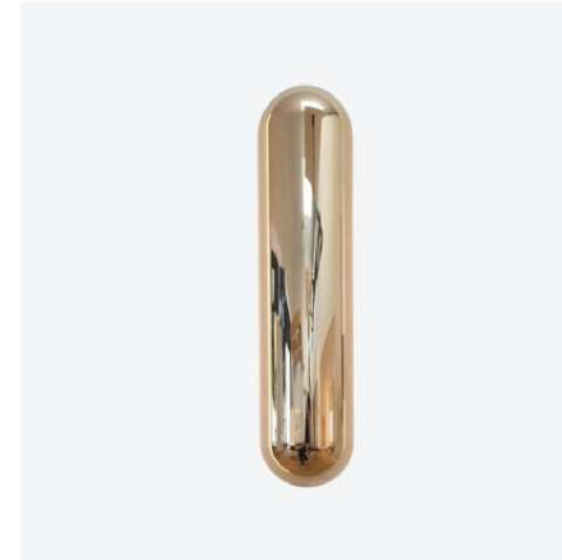






**Saint Honoré Sofa by Pierre Augustin Rose**

Sofa upholstered in Dedar Vladimiro fabric in Corda  
W 126" x D 59" x H 29.5" / L 320 x W 150 x H 75 cm  
Handmade in Europe



**Gélule Wall Lamp by Ozone**

Designed by Joseph Dirand  
Wall lamp with aluminum and brass structure  
Mirror pale gold finish  
L 3.94" x W 5.12" x H 15.8" / L 10 x W 13 x H 40 cm  
Handmade in France



**Stone-Cuprite D'eau Coffee Table by Pierre Bonnefille**

Limited edition: 8 pieces and 2 artist's proofs  
Tabletop made with a mixed media on wood with resin  
Base in patinated brass  
W 66.9" x D 46.5" x H 19.1" / W 170 x D 118.1 x H 48.5 cm  
Handmade in France



**Mast Chair by Atelier Pendhapa**

Chair in stained oak  
Cushion upholstered in Dedar Vladimiro Militare  
W 20.5" x D 20.1" x H 29.5" / W 52 x D 51 x H 75 cm  
Handmade in Indonesia



**Paysage 2 Rug by Atelier Février**

40% Himalayan wool, 50% silk, 10% Hemp  
Ø 196.9" / Ø 500 cm  
Hand-knotted in Nepal



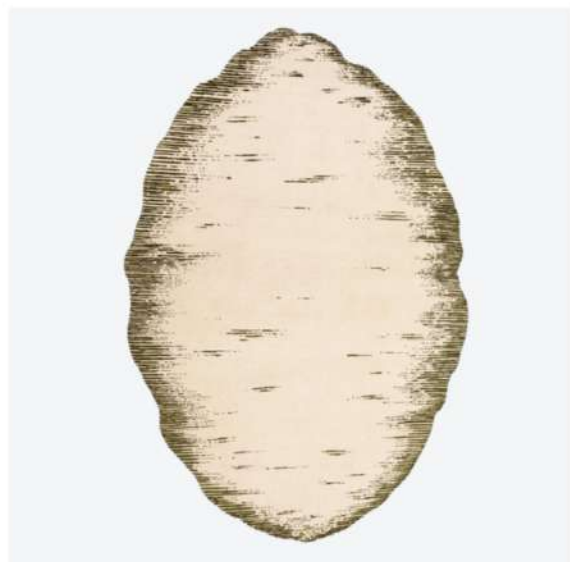
**Luco Table by Studioparisien**

Dining table in bespoke walnut finish  
W 149.6" x D 47.2" x H 28.7" / L 380 x W 120 x H 73 cm  
Handmade in France









**Vitesse Rug by Atelier Février**

Hand-knotted rug  
85% wool, 15% pure silk  
125 knots  
196.9" x 110.2" / 500 x 280 cm  
Hand-knotted in Nepal



**Giraffe Chair by Juliana Lima Vasconcellos**

Chair upholstered in Quaker Nubby Off White  
Structure in brown eucalyptus  
L 20" x W 17.7" x H 35.4" / L 51 x W 45 x H 90 cm  
Handmade in Brazil



**Swan Dining Table Marble by Francesco Balzano**

Limited edition of 12 pieces, signed and numbered  
Dining table in Breccia Aurora Marble  
W 84.6" x D 38.6" x H 29.1" / W 215 x D 98 x H 74 cm  
Handmade in France



[theinvisiblecollection.com](http://theinvisiblecollection.com)







**Strict Bar Stool by Louise Liljencrantz**

Pictured in walnut with black leather seating  
Hard wax oil finish  
L 16.5" x H 31.1" / L 42 x H 79 cm  
Handmade in Stockholm, Sweden



**Peanut Dining Chair by Hamrei**

Dining chair upholstered in Pierre Frey Teddy Mohair in Olive  
Structure in solid natural oiled oak  
W 18.9" x D 22" x H 17.7" / W 48 x D 56 x H 45 cm  
Handmade in Portugal



**Custom Ki Desk by Victoria Magniant**

Desk made in walnut  
L 68.9" x W 31.5" x H 29.5" / L 175 x W 80 x H 75 cm  
Handmade in France











**Marie Table Lamp by Haymann Editions**

Designed by Toni Grilo  
Table lamp in plain aluminium  
Ø 12.2" x H 10.2" / W 48 x D 56 x H 45 cm  
Handmade in France



**Paysage I Rug by Atelier Février**

80% Himalayan wool, 15% silk, 5% Hemp  
133.8" x 74.8" / 340 x 190 cm  
Hand-knotted in Nepal



**Alta Lounge Chair Steel by Etel**

Designed by Oscar Niemeyer & Re-edited by ETEL  
Armchair upholstered in Etel bouclé fabric in Nubby Offwhite  
Stainless steel legs  
W 40.2" x D 27.9" x H 27.5" / W 102 x D 71 x H 70 cm  
Handmade in Brazil

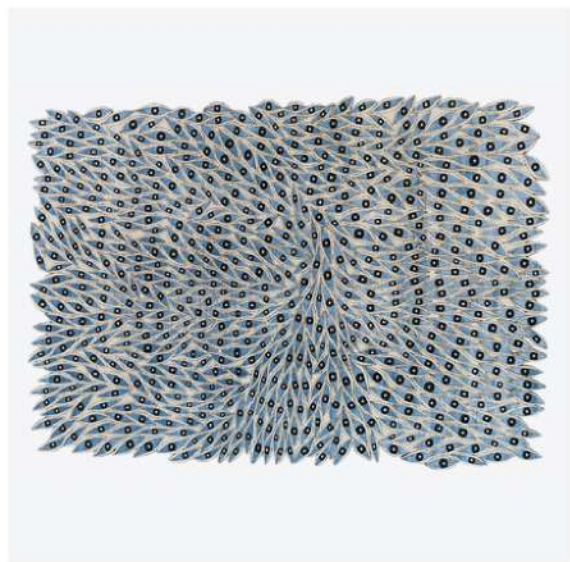






**Arca Side Table by Thierry Lemaire**

Side table in travertine Alabastrino  
Ø 17.7" x H 19.7" / Ø 45 x H 50 cm  
Handmade in France



**Nazar Rug 5 by Atelier Février**

60% Himalayan wool, 40% pure silk / 120 knots  
173.2" x 102.4" / 440 x 260 cm  
Hand-knotted in Nepal



**Parisienne Montmartre Floor Lamp by Ozone**

Designed by Régis Botta  
Floor lamp in aluminium and brass structure with pale gold finish  
Shade in glass  
Ø 9.84" x H 66.9" / Ø 45 x H 50 cm  
Handmade in France



[theinvisiblecollection.com](http://theinvisiblecollection.com)







**Dress Up Console Plaster by Emmanuel Levet Stenne**

Base in plaster  
Tabletop in Travertino Navona marble  
W 59" x D 17" x H 31.5" / W 150 x D 45 x H 80 cm  
Handmade in France



**Frank Table Lamp by Louise Liljencrantz**

Table lamp in travertine stone  
100% silk lampshade included, handwoven Dedar fabric  
Ø 9.85" x H 17.7" / W 150 x D 45 x H 80 cm  
Handmade in Stockholm, Sweden



**B Lamp by Thierry Dreyfus**

Lamp in black Nymphenburg bisque porcelain  
W 9.1" x D 8.3" x H 14.9" / W 23 x D 21 x H 38 cm  
Handmade in France



[theinvisiblecollection.com](http://theinvisiblecollection.com)







**La Ville Rug by Atelier Février**  
80% wool, 20% pure silk / 100 knots  
Ø 98.4" / Ø 250 cm  
Hand-knotted in Nepal



**USA75 Armchair & Ottoman by Norki**  
Vintage pieces designed by Folke Ohlsson in 1956  
Armchair and Ottoman upholstered in natural white curly shearling  
W 28.8" x H 27.6" x D 29.1" / W 73 x H 70 x D 74 cm  
Seat Height: 15.75" / 40 cm  
Handmade in Scandinavia



**Luco Console by Studioparisien**  
Console in lacquer top with black oak base  
L 51.2" x W 13.8" x H 30.3" / L 130 x W 35 x H 77 cm  
Handmade in France









**The Mews House, London**

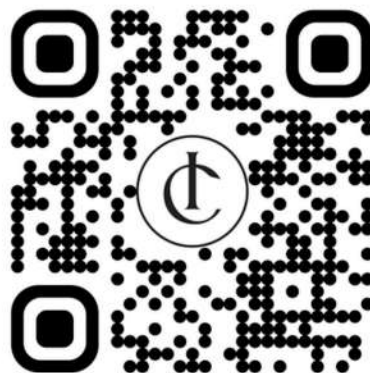
2-4 Huntsworth Mews,  
London NW1 6DD  
+44 (0)20 3868 9012

**The Townhouse, NYC**

24 E 64th St Unit 1R,  
New York, NY 10065  
+1 (646)-759-0619

**Rive Gauche, Paris**

20 rue Amélie,  
75007 Paris  
+33 (0)1 84 88 04 66



Scan here to book an appointment

