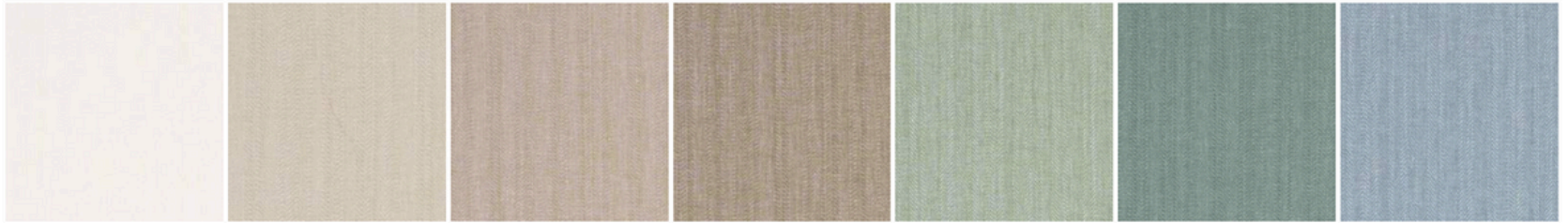


# Fabric Selection

Manuel Canovas - Marco



Neige

Ivoire

Grege

Lin

Jade

Celadon

Celeste



Ciel

Indigo

Paon

Foret

Prairie

Pistache

Biscuit



Caramel

Muscade

Curry

Citron

Rose Ancien

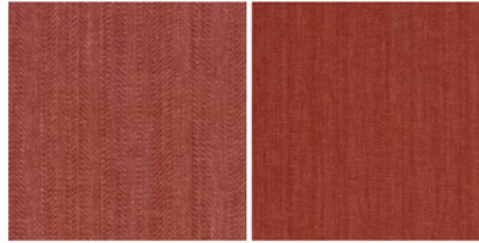
Guimauve

Corail



# Fabric Selection

Manuel Canovas - Marco



Rose The

Paprika

