



INVISIBLE COLLECTION

Roomscapes

INVISIBLE COLLECTION

ROOMSCAPES

Droulers Architecture, Maison Leleu and the laureates of the 26th edition of the Prix Liliane Bettencourt pour l'Intelligence de la Main®.

Acting as an ensemblier, Invisible Collection has brought together two singular voices in the world of interior design for Roomscapes, a new exhibition now on view in New York City. Our Upper East Side gallery has been transformed through a new scenography: the same warm, distinctive sophistication, now expressed through an entirely new composition of designs, objects, and richly textured atmospheres. Each room is conceived as a tableau, evoking intimate and inviting settings, as though visitors were stepping into a collector's home where art and design coexist naturally.

Collezione Droulers, available exclusively through Invisible Collection, is the ultimate expression of Nathalie and Virginie Droulers. Their signature is a delicate alchemy of history, culture, and fantasia. Whether designing an exceptional residence in Switzerland or a superyacht sailing the Mediterranean, their work reflects a deep understanding of fine craftsmanship, a bold use of color, and textured reveries inspired by the fairytale-like surroundings of their upbringing at Villa d'Este. Their layered approach to interior storytelling and unexpected juxtapositions subtly nods to Renzo Mongiardino, whose mastery continues to inform the sisters' evocative aesthetic. All the furniture is dressed in Dedar, including heritage fabrics originally designed by Anni Albers.

With Maison Leleu, Art Deco has rarely felt more alive or relevant than in this collection, where iconic designs by Jules Leleu are reinterpreted with a contemporary sensibility — preserving the maison's DNA while renewing its expression. Exquisitely crafted, the tables and lamps evoke familiar geometric forms, yet appear entirely new when set against a collection of seating revisited by Alexia, defined by sweeping lines, sophisticated details, and exclusive fabrics by Dedar.

Partnering with Fondation Bettencourt Schueller, we present the works of the three laureates of the 26th edition of the Prix Liliane Bettencourt pour l'Intelligence de la Main®. This reinforces the strong bond between Invisible Collection and the Fondation Bettencourt Schueller, reaffirming a shared commitment to supporting exceptional craftsmanship and promoting the richness of French artisanal traditions to an international audience.





Olympia Chandelier by Stephen Antonson

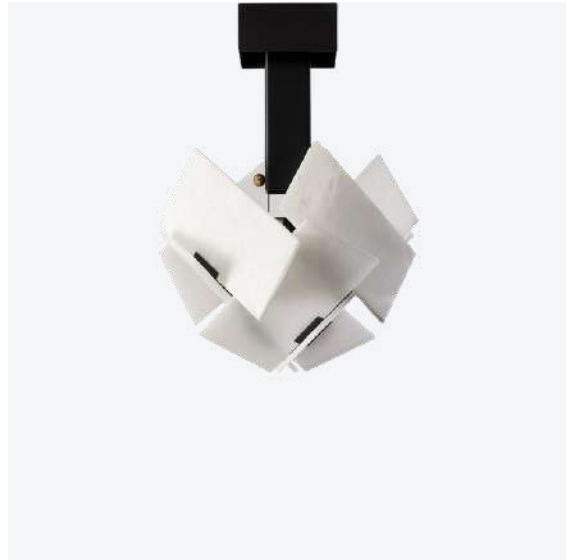
Hand-sculpted plaster on metal armature
Handmade in the United States

Ø 48" x H 40"

\$31,000

Custom Options:

Bronze material and bespoke dimensions upon request

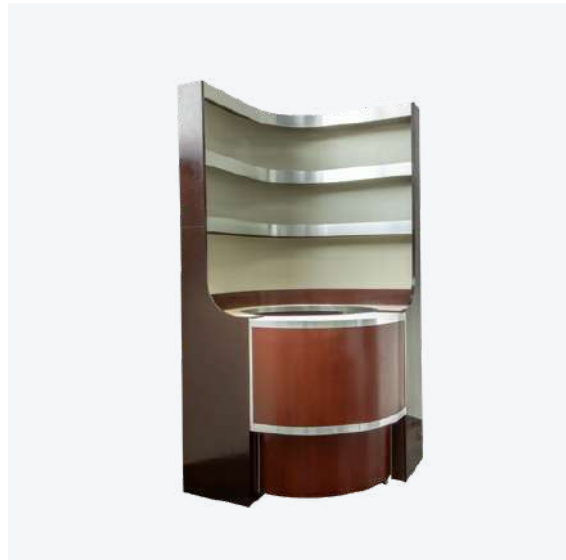


Boule Ceiling Lamp by Galerie MCDE

Designed by Pierre Chareau, re-edited by Galerie MCDE
Ceiling lamp composed of eight rectangular alabaster plates mounted on a netting of steel threads
Structure in black painted metal, square canopy
White alabaster with mix white veined and brown veined alabaster blocks
Handmade in France

Ø 15.7" x H 21.9"

\$4,650



Vintage Cocktail Bar by Willy Rizzo

Vintage piece, 1970s
Mid-Century Modern illuminated cocktail bar cabinet
High-gloss mahogany-colored structure
Satin steel trims and modular inserts
Set of two distinct components: a tall, semi-circular back cabinet equipped with multi-level backlit glass shelving for liquor bottles, and a standalone front service counter that mirrors the curvature of the main unit.
Handmade in Italy

Height: 86.6 in

Width: 59.8 in

Counter Height: 37.4 in

Maximum depth with open door: 69.7 in

\$18,680 incl. custom and duties





Bouge Toi Sofa by Droulers Architecture

Reclining sofa with adjustable backrest system, soft curved shapes and wood structure
Upholstered in Twillman fabric from Dedar, colour perla
Handmade in Italy

W 108.3" x D 36.6" x H 25.2"

\$21,030

Custom Options:

Bespoke dimensions and fabric upon request



Virgi Pouf by Droulers Architecture

Sculptural pouf with stacked-cushion silhouette, solid wood structure and leather tassel corners. Upholstered here in Drawing XVI Fabric from Dedar, colour Charcoal and in Droulers DD Fabric.
Handmade in Italy

W 24.8" x D 18.9" x H 15"

From \$4,250

Custom Options:

Bespoke fabric and tassel colour upon request



Mathew Pouf Shangai by Droulers Architecture

Metal pouf with smooth tubular legs and generous upholstered cushion
Upholstered here in Ritmo fabric from Dedar, colour ivory tusk
Glass ends colour clear
Handmade in Italy

W 26" x D 26" x H 15"

\$8,650

Custom Options:

Bespoke metal finish, fabric and cap colour upon request





DROULERS
DROULERS





Quart De Rond Lamp by Galerie MCDE

Designed by Pierre Chareau, re-edited by Galerie MCDE
Lamp with two alabaster plates in quarter circles
Darkened wrought iron structure
White alabaster with veined brown finish
Handmade in France

W 9.8" x D 8.7" x H 11.8"

\$3,275



Andrin Folding Screen by Garcé Dimofski

Unique piece
Oak frame with crackled paint applied on linen canvas
Handmade in Portugal

L 102.4" x H 86.6"

Individual pannel: L 32.3" x H 86.6"

\$38,480



Chevalier Wall Panel by Jean-Brieuc Chevalier

Laureate of the Liliane Bettencourt Prize pour l'intelligence de la main®
Limited Edition of 8 pieces
Wall panel in American walnut
Mirrored glass with Miyuki beads embroidery
Handmade in France

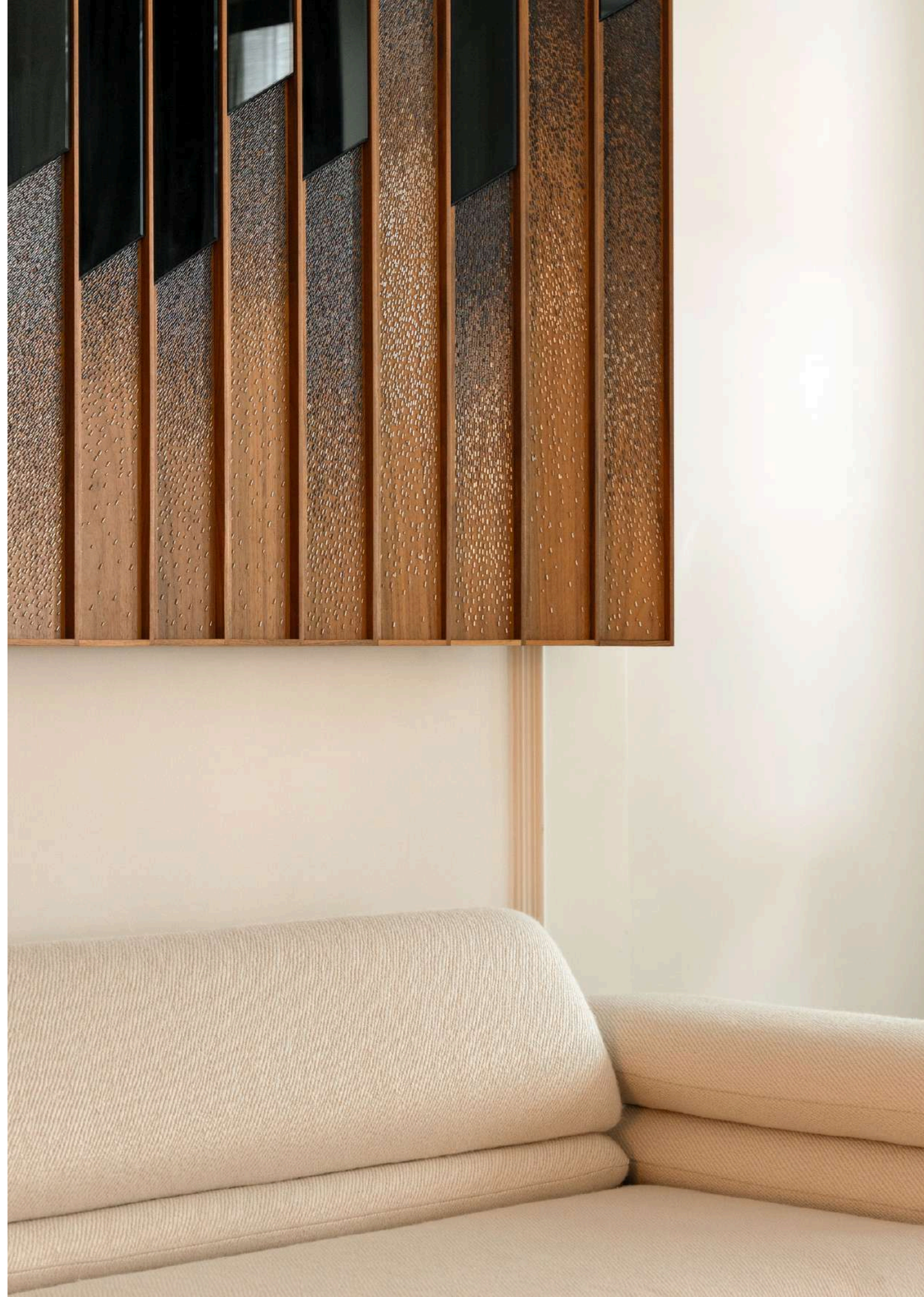
W 45.3" x D 7.1" x H 63.4"

\$41,435

Custom Options:

Bespoke Dimensions upon request





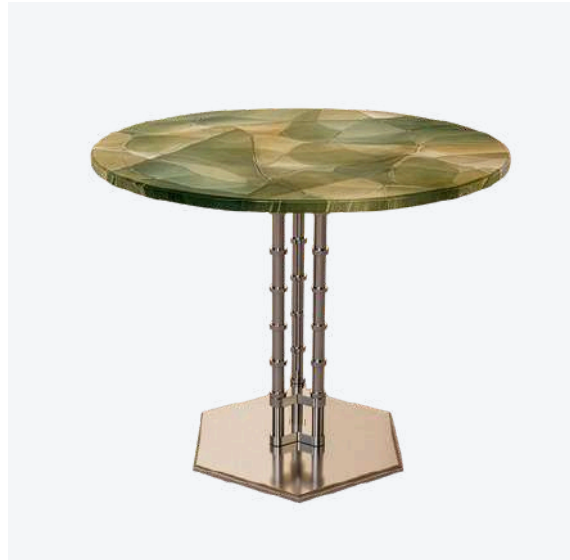


Nat Chair by Droulers Architecture

Chair upholstered in Amoir Libre fabric, col. notte from Dedar
Presented here in chrome with nappa leather tassel colour
shiste; and in bronze with nappa leather tassel colour Tortora
Handmade in Italy

W 18.1" x D 18.9" x H 33.1"

\$4,975



Normandie Table by Droulers Architecture

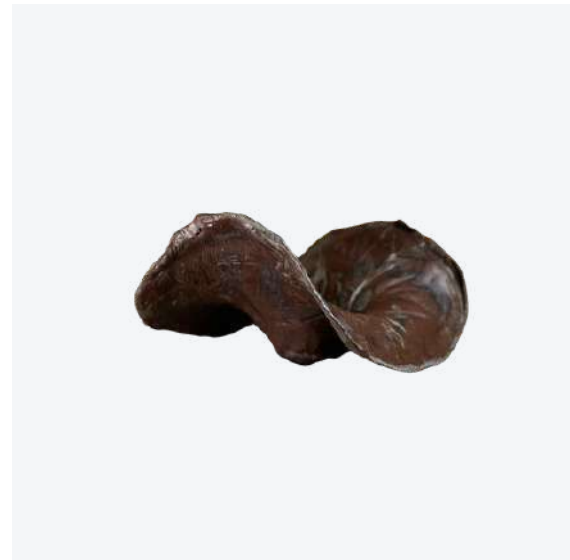
Round table with laminated glass top, colour green-fumé flakes
Steel base and legs
Handmade in Italy

Ø 33.5" x H 29.1"

\$13,170

Custom Options:

Bespoke Colours and Finishes upon request



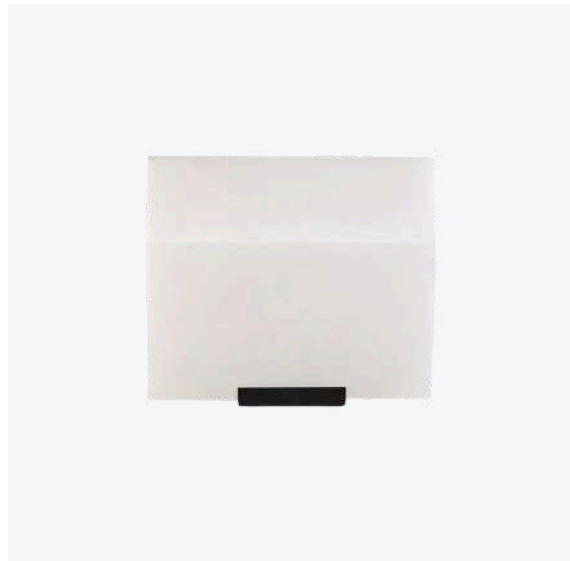
Leaf Dish by Ema Pradère x L'Oeil de KO

Unique piece in ceramic
Designed by Ema Pradère
Handmade in France

L 157.5" x W 19.7" x H 76.8"

\$2,040





Simple Sloping Block Wall Lamp by Pierre Chareau

Designed by Pierre Chareau, re-edited by Galerie MCDE
Sconce composed of one block of alabaster
Black-painted metal mount
White alabaster with veined brown finish
Handmade in France

W 9.1" x D 5.7" x H 7.6"

\$1,610

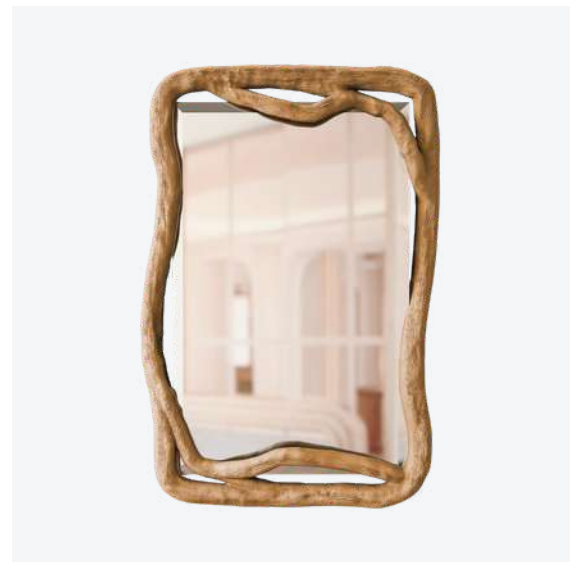


Big Moonlight by Thomas Junghans x L'Oeil de KO

Bronze sculpture, lost wax
2022
Handmade in France

L 29.1" x W 11.8" x H 8.2"

\$15,800



Aux Arbres Mirror Wood M by Hugo Drubay

Sculptural oak frame with branch-like effects
Beveled mirror in pink colour
Handmade in France

W 24 " x D 4.7 " x H 37.8"

\$15,155





JMU Shape Sofa by Droulers Architecture

Modular sofa with torchon-inspired design, ribbed fabric upholstery and padded outer backrest covers
Upholstered in Lilaz fabric from Dedar, colour corallo
Handmade in Italy

W 100.8" x D 97.6" x H 31.5"

\$71,820

Custom Options:

Bespoke fabric and modular configuration upon request



Conversation Bamboo Coffee Table by Droulers Architecture

Coffee table with perimeter seat designed for gathering and conversation, upholstered reversely in Drawings XVI col.2 from Dedar
Brass structure and top details
Handmade in Italy

W 63" x D 47.2" x H 31.5"

\$28,295

Custom Options:

Bespoke Fabrics, Dimensions and Material upon request



Foldy Butler Tray by Droulers Architecture

Tray in plexiglass with After Laverne Bronze Print
Feet in chrome plated brass
Handmade in Italy

W 29.13" x D 17.7" x H 16.9"-26.7" (adjustable)

\$5,495

Custom Options:

Available in tortoiseshell & After Laverne tray motifs; burnished or chrome-plated brass edging







Nun Bedside Lamp by Pierre Chareau

Designed by Pierre Chareau, re-edited by Galerie MCDE
Table lamp composed of four triangular alabaster plates
White alabaster with veined white
Base in mahogany
Handmade in France

W 20.9" x D 10.6" x H 17.7"

\$4,150



Fleur by Chloé Valorso x L'Oeil de KO

Sculpture in bronze
Handmade in France

L 16.5"

\$1,610



Melted Bronze Candle Holder N°1

Candle holder in natural bronze or natural bronze with black patina,
produced with the lost wax technique
Each piece is unique

Handmade in Italy

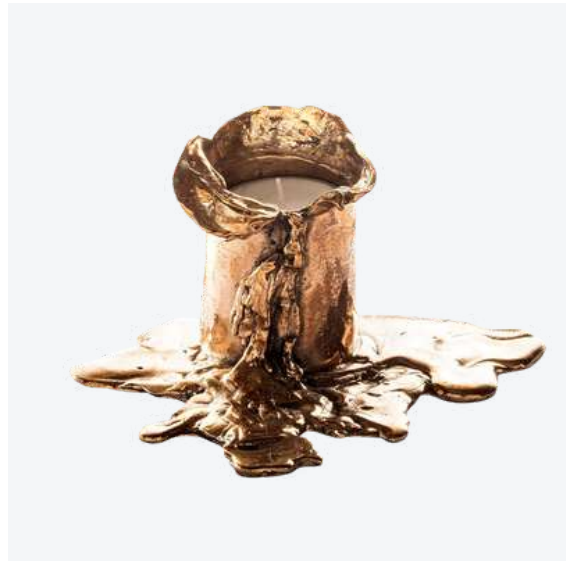
Ø 9.85" x H 6.11"

\$2,070

Custom Options:

Bespoke Dimensions upon request





Melted Bronze Candle Holder N°2 by Osanna Visconti

Candle holder in natural bronze or natural bronze with black patina, produced with the lost wax technique
Each piece is unique

Handmade in Italy

Ø 9.85" x H 4.33"

\$2,070

Custom Options:

Bespoke Dimensions upon request



Bol Agnes by Stephen Antonson

Bowl in plaster
Available in bronze upon request
Handmade in the United States

W 15" x D 14" x H 9"

\$3,850



Saia Sconce by Garcé Dimofski

Ceramic sconce with a twisted form
Finished in Almond White H04
Handmade in Portugal

W 7.9" x D 6.7" x H 13.8"

\$5,500

Custom Options:

Bespoke Dimensions and Finishes upon request

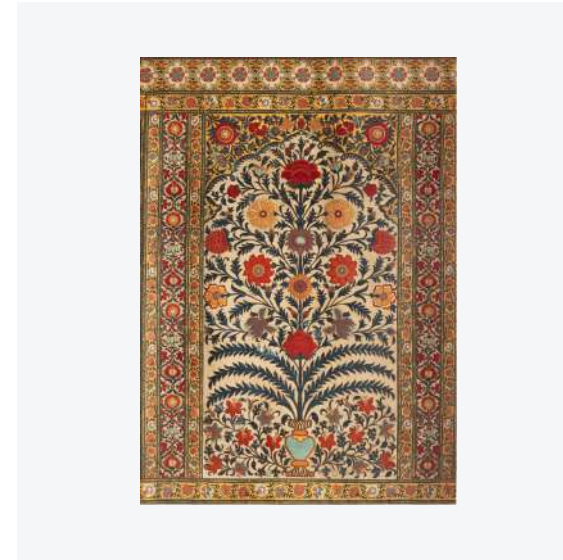


Bhuranpur Flowering Art Panel col.1 by House of Kandadu

Unique piece
Hand-painted and appliquéd decorative panel with a flowering vase framed within an arch, on an aged natural linen ground, inspired by a tent panel of the early 18th century.
Handmade in Kandadu, India

85.8" x 62"

\$18,450



Bhuranpur Flowering Art Panel col.2 by House of Kandadu

Unique piece
Hand-painted and appliquéd decorative panel with a flowering vase framed within an arch, on an aged natural linen ground, inspired by a tent panel of the early 18th century.
Handmade in Kandadu, India

85.8" x 62"

\$18,450



Paysage I Rug Natural White by Atelier Février

Atelier Février x François Mascarello
Rug Natural White
80% Himalayan wool, 15% silk, 5% Hemp
100 knots/sq. inch, 155 000 knots/sq. meter
Hand-knotted in Nepal

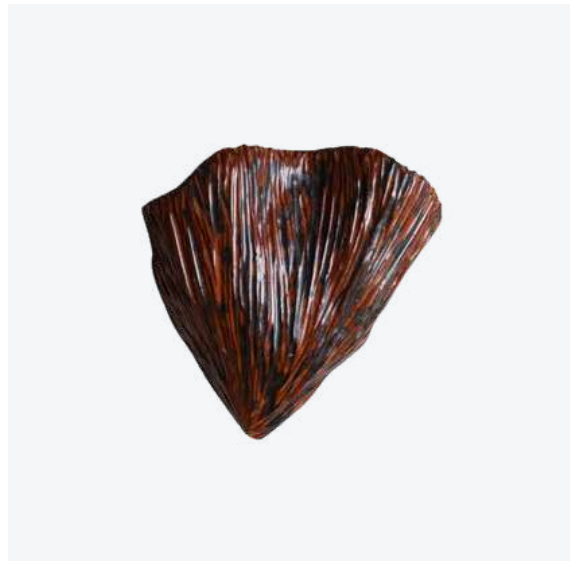
189" x 125"

\$27,985

Custom Options:

Bespoke Dimensions and Finishes upon request





Oti Wall Lampshade by Droulers Architecture

Ceramic lampshade
Photographed here in red glazed ceramic
Handmade in Italy

W 8.7" x D 4.5" x H 10.2"

\$3,405

Custom Options :

Bespoke Finishes and Colours upon request





Dark Land of the Sun by Brian Rattiner
Acrylic, graphite, pastel, and salt on polyester

H 50" x W 33.86" x D 0.39"

\$6,100



Tufo Side Table by Hors Studio

Laureate of the Liliane Bettencourt Prize pour l'intelligence de la main®

Unique piece

Side table made from Leatherstone, polished or waxed varnish finish

Handmade in France

W 30.7" x D 30.7" x H 25.2"

\$18,540

Custom Options :

Bespoke material and dimensions upon request



Paola Sconce by Stephen Antonson

Sconce in cast plaster

Handmade in the United States

W 4.5" x D 7.5" x H 17.7"

\$6,675

Custom Options :

Bronze material and bespoke colours upon request





Balae Chair by Maison Leleu

Chair upholstered in Akhlat fabric from Dedar, col. dorato 001
Structure in mahogany shade 3, high gloss 100 finish
Handmade in France

W 16.1" x D 19.7" x H 29.9"
Seating height: 17.7"

\$7,445

Custom Options :

Bespoke Fabrics, Dimensions and Finishes upon request



Panter Chair by Maison Leleu

Chair upholstered in Diapason fabric from Dedar, col. avorio 002
Legs in mahogany shade 3 with matt 20 gloss finish
Backrest in two parts assembled by seven small wooden spheres
Handmade in France

W 17.7" x D 22.2" x H 36.9"
Seating height: 17.7"

\$8,105

Custom Options :

Bespoke Fabrics, Dimensions and Finishes upon request



Silver Bridge Console by Maison Leleu

Limited Edition
Console with metal tabletop, silver leaf finish
Wood legs fitted to the top, mahogany shade 3 with matt 20 finish
Handmade in France

W 99.2" x D 13.8" x H 39.4"

\$34,775

Custom Options :

Bespoke Woods, Dimensions and Finishes upon request







Longo Chair by Maison Leleu

Chair pictured here in Holden fabric from Dedar, col. Magnolia 001
Structure in mahogany shade 3 with matt 20 gloss finish
Handmade in France

W 22.2" x D 20.5" x H 37.3"
Seating height: 17.7"

\$6,640

Custom Options :

Bespoke Fabrics, Dimensions and Finishes upon request



Lila Desk by Maison Leleu

Limited Edition
Desk in mahogany shade 3 with matt 20 gloss finish
Composed of two superimposed levels
Handmade in Portugal

W 79.5" x D 47.2" x H 31.5"

\$29,160

Custom Options :

Bespoke Dimensions and Finishes upon request



Ava Chandelier by Maison Leleu

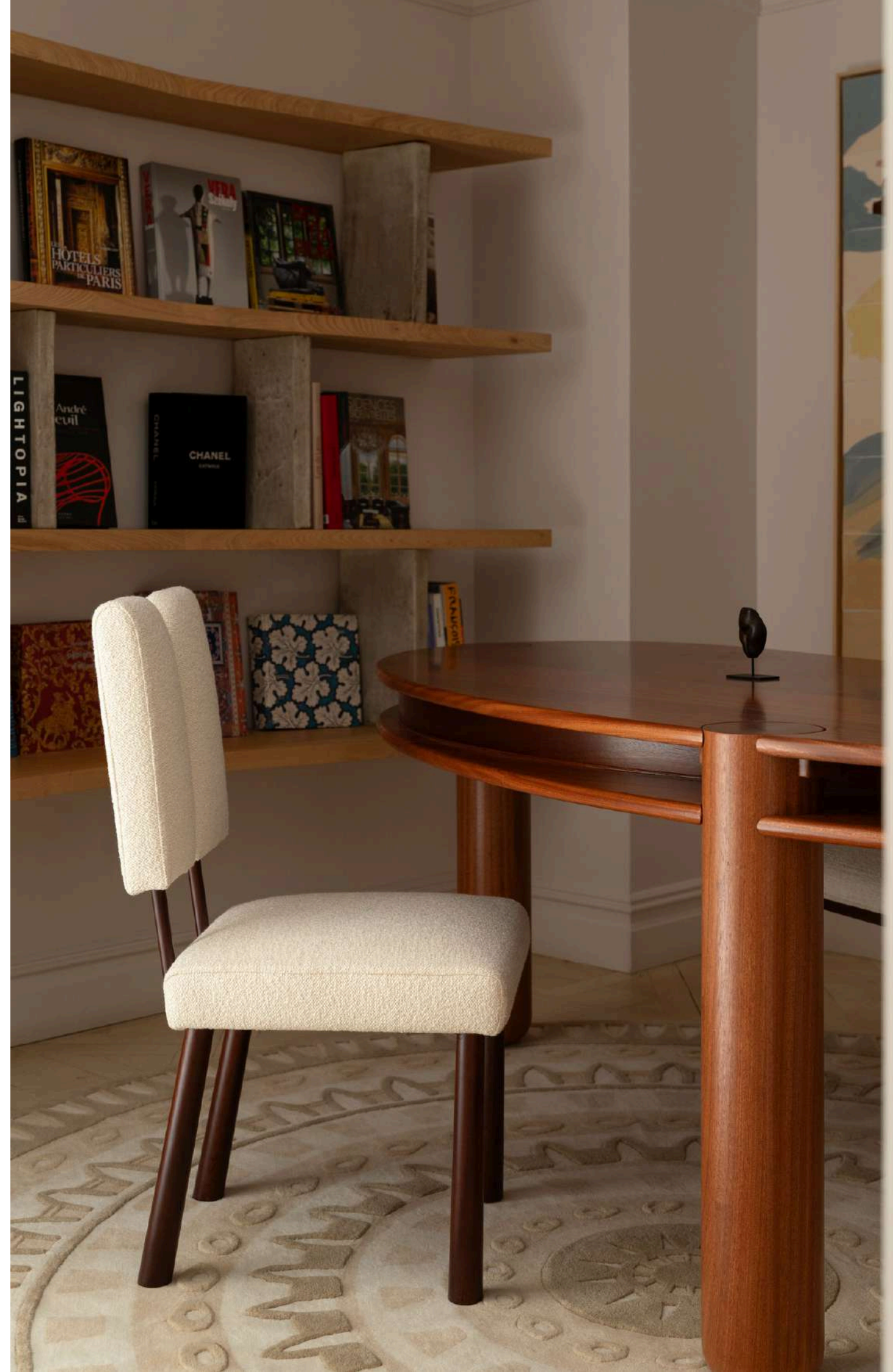
Limited Edition
Ceiling lamp in plaster-like finish

Ø 31.5" x H 15.7"

\$26,700

Custom Options :

Bespoke Dimensions and Finishes upon request







Florina Armchair by Maison Leleu
Armchair upholstered in Plushy Oro Vecchio from Dedar, colour celadon
Legs in satin walnut, shade 2 colour
Handmade in France

W 27.7" x D 28" x H 28.3"
Seating height: 15.7"

\$12,630

Custom Options :
Bespoke Fabrics and Finishes upon request



Electra Nesting Tables by Maison Leleu
Nesting tables with cognac lacquer tabletop
Legs in hammered metal and matte gold leaf
Sold as a pair
Handmade in France

Large table: Ø 17.7" x 19.7"
Small table: Ø 14.6" x 17.7"

\$10,315

Custom Options :
Bespoke Dimensions, Finishes and Colours upon request



Clarence Floor Lamp by Maison Leleu
Limited Edition
Floor lamp in alabaster
Metal base with silver leaf finish
Handmade in Italy

W 12.6" x D 12.6" x H 59.1"

\$28,795





Bubble Wall Lamp by Maison Leleu

Wall lamp composed of three blown glass globes connected by a braided cable
Base in shiny brass
Handmade in France

Small: W 21.7" x D 17.7" x H 22.8"
Globe diameter: 5.9"

\$5,500

Custom Options :

Bespoke Dimensions and Finishes upon request



Gizeh Rug by Maison Leleu

Hand-tufted or hand-knotted rug
100% wool
Anti-slip pad included
Handmade in India

From \$2,080 per m2

Custom Options :

Bespoke Dimensions, Shapes and Colours upon request



Marilyn Sofa by Maison Leleu

Sofa upholstered here in Script fabric from Dedar, col. Banquise 003
Base in mahogany shade 3, high gloss 100 finish
Handmade in Portugal

W 69.3" x D 29.3" x H 29.5"
Seating height: 15.7"

\$39,830

Custom Options :

Bespoke Fabrics, Dimensions and Finishes upon request



Cachet Rug by Maison Leleu

Hand-tufted rug, mix wool and viscose
Available in different colours
Anti-slip pad included
Handmade in India

From \$3,370 per m2

Custom Options :

Bespoke Dimensions, Shapes and Colours upon request



Julie Coffee Table by Maison Leleu

Coffee table with cognac lacquer tabletop
Gilded bronze and gunmetal structure
Decorations and details in polished gold
Handmade in France

W 55.1" x D 23.6" x H 17.7"

\$21,270

Custom Options :

Bespoke Dimensions and Finishes upon request



**Alga Candle Holder Triple Green Patina
by Osanna Visconti**

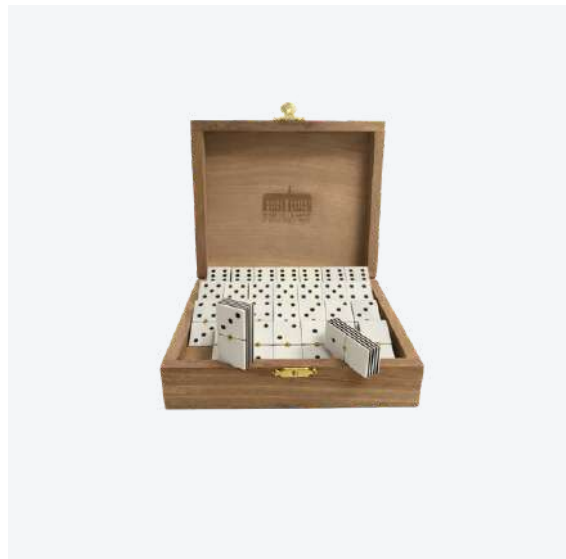
Candle Holder in natural bronze, produced with the lost wax technique
Each piece is unique
Handmade in Italy

W 16.5" x D 2.4" x H 9.4"

\$2,280

Custom Options :

Bespoke Dimensions upon request



“20 ans” Domino Set by Musée de la Nacre et de la Tableterie

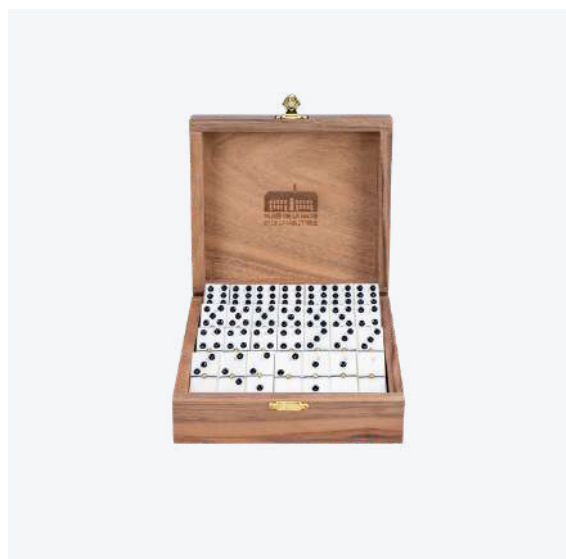
Layered domino set with handcrafted box
Ebony and bovine bone with brass pivot
This bone and ebony domino set is handcrafted by the museum’s tablet-making artisans using traditional craftsmanship techniques.
Handmade in France

Domino: 1.42" x 0.71" x 0.35"
Box: 5.6"7 x 4.92" x 1.93"

\$200 incl. custom and duties

Custom Options :

Bespoke Colours, Dimensions and Finishes upon request



“Tactile” Domino Set by Musée de la Nacre et de la Tableterie

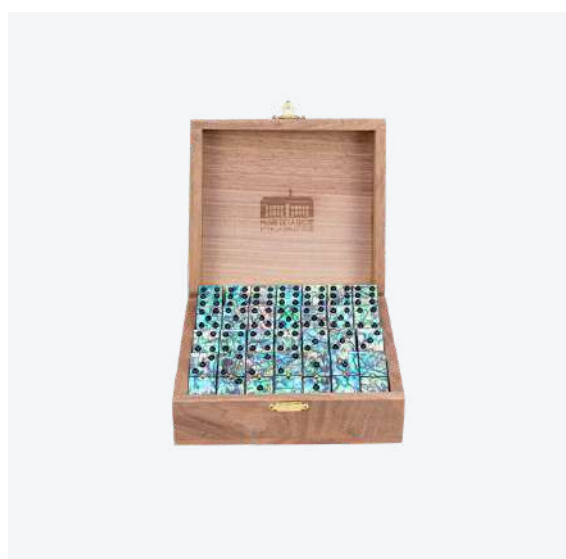
Tactile bone and ebony domino set with handcrafted box
Bovine bone and ebony wood with brass pivot and markers
This bone and ebony domino set is handcrafted by the museum’s tablet-making artisans using traditional craftsmanship techniques.
Handmade in France

Domino: 1.42" x 0.71" x 0.35"
Box: 5.6"7 x 4.92" x 1.93"

\$540 incl. custom and duties

Custom Options :

Bespoke Colours, Dimensions and Finishes upon request



“Haliotide” Domino Set by Musée de la Nacre et de la Tableterie

Haliotis and ebony domino set with handcrafted box
Haliotis, blue mother-of-pearl, and ebony wood with brass pivot
This 16-line haliotis and ebony domino set is handcrafted by the museum’s tablet-making artisans, perpetuating traditional craftsmanship.
Handmade in France

Domino: 1.42" x 0.71" x 0.35"
Box: 5.6"7 x 4.92" x 1.93"

\$900 incl. custom and duties

Custom Options :

Bespoke Colours, Dimensions and Finishes upon request





Givergny Sous La Pluie by Rosie Mistou

Unique piece
Faience and wood frame
Handmade in France

Each item is 58.27" x 35.83" x 1.57"

\$67,284

Custom Options :

Bespoke Colours and Dimensions upon request



La Traversée des Sables by Rosie Mistou

Unique piece
Faience and wood frame
Handmade in France

41.34" x 65.35" x 1.57"

\$46,875

Custom Options :

Bespoke Colours and Dimensions upon request



**Alga Candle Holder Single Green Patina
by Osanna Visconti**

Candle holder in natural bronze, produced with the lost wax technique
Each piece is unique
Handmade in Italy

Ø 2" x H 11"

\$1,170

Custom Options :

Bespoke Dimensions upon request





Entrelacs Table Lamp by Maison Leleu

Limited Edition

Table lamp with a sculptural base in lacquered metal
Handmade in Italy

W 23.6" x D 13" x H 23.6"

\$9,425

Custom Options :

Bespoke Finishes and Colours upon request



Olivia Armchair by Maison Leleu

Armchair upholstered here in Holden fabric from Dedar, colour magnolia
Legs in cherrywood with glossy finish, shade 3 colour
Feet in satin
Handmade in France

W 29.5" x D 27.6" x H 31.9"

Seating height: 15.7"

\$14,240

Custom Options :

Bespoke fabrics, dimensions and finishes upon request



Sana Candle Holder Bronze Purple by Laura Gonzalez

Candle holder in bronze with antique patinas
Handmade in France

Ø 9.4" x H 11.8"

\$4,445



INVISIBLE COLLECTION

About Invisible Collection

Invisible Collection is the leading online gallery for discovering contemporary designs from the world's most renowned talents. Bringing together more than 250 artists, decorators, architects, and designers on its platform, alongside 350 exceptional artisans, and supported by a team of 60 talented and passionate individuals, Invisible Collection bridges the old and the new, merging the traditions of decorative arts with innovative digital offerings.

Celebrated as the quintessential representation of the new French aesthetic, the brand offers access to a unique, curated inventory of bespoke creations, entirely crafted by extraordinary masters of craftsmanship who are the custodians of rare savoir-faire. Partnering with Le Mobilier National and Chanel's Maisons d'art pour la Mode et la Décoration, Invisible Collection is a pioneering leader in redefining contemporary design as a means of cultural engagement and sustainable luxury. Its four galleries in London, Paris, New York, and LA, along with its offices in Dubai, Mumbai, Singapore and Shanghai serve as the brand's homes, where clients and collectors can discover contemporary creations and enjoy rich cultural experiences.

Founded in 2016 by Isabelle Dubern-Malleveys and Lily Froehlicher, Invisible Collection is committed to environmental and social responsibility by setting new standards in its industry, becoming the first to achieve B-Corp certification. Since 2021, the brand has offset the carbon emissions of its transport and delivery, and it supports United in Design, a charitable organization that addresses the lack of diversity in the design industry.



Proud to be Certified B Corporation™

This company meets the highest verified standards of social and environmental performance, transparency, and accountability.

www.invisiblecollection.com

@theinvisiblecollection #theinvisiblecollection



Why Shop at Invisible Collection?

1

World's Best Interior Designers

Shop their covetable collections of iconic pieces made to stand the test of time and mark history.

2

Expert Curation

Discover emerging talents and design masters specially handpicked for their relevance assembled in our curated collection.

3

Exclusives & Collectibles

Access designers and limited-edition collections you can't shop elsewhere including collectibles that appreciate over time.

4

Superior Craftsmanship

Each piece is skillfully hand-crafted by the best artisans: we personally oversee production thus guaranteeing quality & authenticity.

5

Seamless Customization

We handle all of your customization needs, from bespoke materials and dimensions to delivery management.

6

Positively Sustainable

Enjoy eco-friendly designs crafted by master artisans committed to the planet and get carbon-free delivery as we compensate all emissions of your shipment.

7

One Secure Checkout

Shop from multiple ateliers worldwide with one single checkout, and pay securely in USD, Euro or GBP.

8

At your Service

Enjoy the assistance of a dedicated contact to manage your project or custom requests to multiple designers, anywhere in the world.

9

White Glove Delivery

We work with trusted fulfilment partners to offer you insured worldwide shipment including professional delivery and installation.

10

Visit our Galleries

Discover our star designers' collections in person, visit us in London, New York and Paris.

Invisible Collection London

2-4 Huntsworth Mews, NW1 6DD
Monday to Friday, 10am-6pm
+44 (0)20 3868 9012

Invisible Collection New York

24 E 64th St, New York
Monday to Friday, 10am-6pm
+1 (646) 759 0619

Invisible Collection TriBeCa

Tribeca, New York
By Appointment Only
+1 (646) 759 0619

Invisible Collection Paris

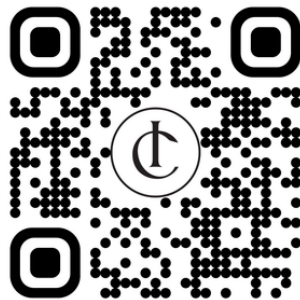
20 rue Amélie, Paris VII
Monday to Friday, 10am-6pm
+33 (0)1 84 88 04 66

Invisible Collection x Beaux Arts

Rue Bonaparte, Paris
By Appointment Only
+33 (0) 1 84 88 04 66

Invisible Collection Los Angeles

Phillips, 9041 Nemo St
By Appointment Only
+1 (646) 759 0619



Scan Here to Book an Appointment